



WSSC - WEDNESDAY NIGHT AT THE RACES

Sailing Instructions 2017

Spring Series – May 17 – June 21
 Summer Series – June 28 – Aug 9
 Fall Series – August 16 – Sept 13

Organizing Authority:
West Shore Sail Club (WSSC)

2017 West Shore Sail Club Race Committee

Contact	Position	Home	Cell
Chris McCardell	- WNATR Chair	(810) 602-1043	
WSSC Race Committee Members			
Contact	Position	Home	Cell
Bryce Boardman	- Past Commodore	(734) 341-0323	
David Monk	- Commodore	(734) 676-9656	
Ed Sakowicz	- Vice Commodore	(313) 562-1462	
Lance Yee	- Rear Commodore	(248) 207-6205	
Ed Sakowicz	- Specialty Races	(313) 562-1462	
Dick Synowiec	- Protest Chairman	(734) 676-0694	(734) 674-4008
Todd Duffett		(734) 675-6386	
Tim Lozon		(734) 775-2520	
Steve Semenick		(517) 515-7854	
Matt Dubois			(734) 250-4496
Doug Howe		(734) 675-6133	

AFTERGLOWS

After each race, WSSC invites all WNATR skippers and crew to join their fellow competitors for food, drink and camaraderie at Grosse Ile Yacht Club or Ford Yacht Club. GIYC will host the first 4 races. FYC will host the following 6, GIYC will host the last 5. Before the first warning signal, the race committee boat should announce on VHF Ch 71 the location of that evening's afterglow. -- Preliminary race results may be announced at this event at the discretion of the WNATR race co-chairman. Official results will be available on noticeofrace.net.

BACKSTAY PENNANTS GENEROUSLY DONATED BY DIEBALL SAILING (734-561-3099)

***Race Results will be posted on
noticeofrace.net, our web site and e-mailed to those providing an e-mail address.***

Sailing Instructions

1.0 MANAGEMENT AND RULES

- 1.1 The races will be under the management of the WEST SHORE SAIL CLUB (WSSC) OFFICERS AND RACE COMMITTEE, which will have full and final authority in establishing the racing articles and in interpreting the rules.
- 1.2 The US SAILING RACING RULES of SAILING (RRS), and the prescriptions of the UNITED STATES SAILING ASSOCIATION, except as modified by this program, will govern all races.

2.0 SAIL NUMBERS

- 2.1 Sail numbers must be carried on both sides of mainsail, overlapping headsails, and spinnakers, or in compliance with RRS Appendix G. FINISH TIMES MAY NOT BE TAKEN if sails are not numbered as registered.

3.0 RACE CLASSES

- 3.1 Jib and Main (JAM), Spinnaker and Cruising Class.
- 3.2 A boat will be considered in the cruising class only if it fits the formula attached as part Addendum C in this document. Cruising class ratings will be assigned at the discretion of the Race Chairman (in line with PHRF-LE ratings) without penalty.. This status must be reviewed by the race committee at least two weeks prior

to the actual race and a determination made as to whether the boat and crew are primarily racers or cruisers. The number of crew members will not be a factor.

- 3.3 Each class may be subdivided based on PHRF rating numbers and the number of competitors registered.
- 3.4 The Race Committee may split the class for purposes of class scoring, at its discretion.

4.0 CLASS FLAGS

- 4.1 Class Flags will be distributed to each class and must be flown from the aftermost backstay approximately six (6) feet above the deck. Yachts not in compliance with this rule are subject to protest and disqualification.

5.0 RADIO COMMUNICATION

- 5.1 VHF Channel 71 will be used for communication and courtesy broadcasts, as well as for notification of a race being cancelled due to severe weather conditions.
- 5.2 Any yacht that retires from a race shall contact the committee boat. This may be done on channel 71.



WSSC - WEDNESDAY NIGHT AT THE RACES

Sailing Instructions 2017

6.0 COURSES AND MARKS

- 6.1 All races will be sailed utilizing the WSSC RACE BUOYS. The Race Committee will display a course flag as indicated on the Race Course section, Addendum A of these instructions before the first warning signal is hoisted.
- 6.2 Only one Windward Leeward (WL) course should be raced per series.
- 6.3 The COURSE DIAGRAM is for REFERENCE ONLY. All course headings and distances are **APPROXIMATE** and ARE NOT TO BE USED FOR NAVIGATION.
- 6.4 All Marks will be a cylindrical form, white in color with orange reflective tape and an identification letter; additional orange tape may be applied as required. A round white or orange inflatable buoy may replace a missing mark. A missing mark which has not been replaced by an inflatable buoy or as provided in RRS 34, will cause the race to be abandoned.
- 6.5 Changes to the Sailing Instructions will be announced prior to implementation, and will be posted by e-mail to each skipper or posted on noticeofrace.net prior to the start of the race. The date that any changes are to go into effect will be listed on the official notice of change.
- 6.6 There are no make-up races for any series.

7.0 SIGNALS

- 7.1 Signals shall be hoisted in accordance with RRS Rule 26.
- 7.2 In the event a race is abandoned, Code "N" Flag will be hoisted. Code Flag "N" is a blue and white-checked flag. This changes RRS 32.

8.0 RESTRICTED AREA

- 8.1 The restricted area is an oval whose imaginary boundary is Fifty (50) yards away from both sides and both ends of the start/finish line. Each yacht must KEEP CLEAR of the restricted area, and the first leg of the course until the warning signal, 5 minutes before its class start.
- 8.2 After starting, a boat shall not cross the start/finish line until she finishes. The line and its ends shall be considered obstructions for the purposes of RRS 19 and 20.
- 8.3 If a boat fails to stay clear of the start/finish line during the duration of the race (except when starting and finishing) that boat can be protested by the committee boat or another competitor and may be subject to disqualification.

9.0 STARTING SEQUENCE

- 9.1 The starting sequence will be in the following order. See Addendum A for more details. Note: Start times are approximate

6:55	SPINNAKER C	Yellow Flag
7:00	JAM A	Purple Flag
7:05	Jam B	Green Flag

Five minute delay – Break in time sequence

7:15	SPINNAKER A	Blue Flag
7:20	SPINNAKER B	Grey Flag

10.0 START

- 10.1 Races will be started using RRS rule 26, with classes starting as listed on the starting sequence listed in these instructions.
- 10.2 The starting line shall be between a staff displaying an orange flag on the Committee boat (or the mast of the committee boat if no orange flag is displayed) and the course side of C Mark.
- 10.3 The committee boat may utilize a protection buoy. This buoy is considered to be an extension of the Committee boat. No yacht may properly start between the protection buoy and the committee boat.
- 10.4 The committee boat will attempt to acknowledge any boats on the course side (OCS) of the starting line at her starting signal by the following: displaying code flag X (white with blue cross) along with a sound signal, and hailing the sail number or boat name. An attempt may also be made to hail the sail numbers of any boats OCS on VHF channel 71. Failure of a boat to observe these signals will not excuse a premature start. It is the responsibility of each yacht to make a proper start.
- 10.5 CONTACT WITH THE COMMITTEE BOAT MEANS AUTOMATIC DISQUALIFICATION WITHOUT APPEAL!!! This changes RRS 31 and 21.

11.0 FINISH

- 11.1 The finish line shall be between a staff displaying an orange flag on the committee boat (or the RC Flag if an orange flag is not displayed), and the course side of the finishing mark. Boats shall be considered finished when any part of their boat in normal position passes across the finish line from the course side (from the direction of the last mark). Finishers must comply with rule 28.2 to be considered properly finished.
- 11.2 To assure the best possible accuracy in timekeeping, after dark, call out your sail number and illuminate your sail as you approach the finish line. It is the responsibility of each yacht to know the time you finish and the yachts finishing before and after you. **KEEP A RECORD AND CONTACT THE RACE COMMITTEE IF YOU FIND A DISCREPANCY.**
- 11.3 The committee boat will try to display a yellow anti-collision strobe light or other identifying light and its anchor light after dark.
- 11.4 The race committee boat will remain on station until 2200 hours GPS time (10:00 PM). The committee boat will not take the time of any yacht finishing after 2200 hours GPS Time (10:00pm). One yacht finishing in a class before the time limit expires constitutes a valid race for that class.

12.0 INDIVIDUAL RACE RESULTS

- 12.1 Preliminary race results may be announced at an afterglow at the discretion of the WNATR race co-chairman.
- 12.2 Official results will be posted on noticeofrace.net.



WSSC - WEDNESDAY NIGHT AT THE RACES

Sailing Instructions 2017

13.0 SERIES SCORING

- 13.1 The Low Point Scoring System described in the US Sailing RRS applies. Three series of five races each are scheduled, those being a spring, summer, and fall Series. Series totals are computed by totaling the best three race scores for the series.
- 13.2 Shall a tie occur, the tie breaker will follow US Sailing RRS Tie breaking series rule, only using Appendix A scoring, series ties A8.1. If a tie still remains, the tie will not be broken.
- 13.3 In the event of only getting 3 races off, there will not be any throw outs.
- 13.4 A boat that does not start (DNS) will be scored points equal to the total of the number of boats registered for that start. A boat that starts but does not finish (DNF) will be scored the number of boats that finish, plus one. A boat that is disqualified (DSQ) is scored the number of boats registered for the series, plus one.
- 13.5 Committee boats are selected from WSSC members or volunteers on a rotating basis. The skipper responsible for Committee boat duty must supply and serve on the committee boat. **Boats serving as committee boat will be given a First Place Finish for that race.**
- 13.6 Skippers that do not reasonably follow instructions that are supplied in the committee boat box, shall be considered not following committee boat duties. They shall be subject to protest hearing with potential penalties of not receiving the score for the race, or potentially a DNS.

14.0 WNATR AWARDS

- 14.1 Flags will be awarded to the top finishers in each class for each series (Spring, Summer and Fall). The number of flags awarded per class will be at the discretion of the WSSC Race Committee.
- 14.2 A trophy will be awarded to the yacht that finishes first in each class for the year, taking the best eleven (11) of fifteen (15) scores.
- 14.3 West Shore Sail Club will award Boat of the Year trophies to the WSSC yacht in the SPINNAKER and JAM classes accumulating the best point record using the Cox-Sprague scoring system. Refer to the WSSC web site for details.

15.0 PROTESTS

- 15.1 Yachts protesting must follow Part 5, Section A of RRS, except there shall be no charge for filing a protest.
- 15.2 A boat wishing to protest must inform the committee boat of their intention to protest, either by hail or VHF, after finishing, and must inform a member of the RACE COMMITTEE within two (2) hours of finish (or retiring) of their intent to file protest.
- 15.3 Protest shall be written on a US Sailing Protest, Regress and Reopening form listed at the end of Appendix T of RRS and lodged with a WSSC race committee representative by 10 pm on the first Friday after finishing or retiring from the race. A protest can be lodged in person, by text or email.
- 15.4 The protest committee will use pre-hearings whenever possible to expedite the protest processes. If involved in a protest, you will be notified of the pre-hearing procedure.
- 15.5 All protests will be heard at a time and place to be determined by the protest committee. Protest procedures as outlined in Appendix M of RRS will be followed. Competitors will be informed when there is a hearing in which they are an interested party. Failure on the part of any party to attend a protest, or send a representative to attend the hearing may justify the Protest Committee to decide the protest as it deems fit with the evidence available.
- 15.6 The Two-Turns Penalty is replaced by the One-Turn Penalty. This changes RRS 44.1.

16.0 HOMELAND SECURITY

- 16.1 Racers should be aware that numerous restrictions on maneuvering and navigation may be in place on **International waters** constituting and adjacent to the racing area- mainly in the Detroit River Shipping channel. Failure to honor these and subsequent delays to racing due to that are NOT grounds for redress.
- 16.2 Racing boats shall not be entitled to redress due to stoppage or other material interference by law enforcement authorities.

17.0 Rating Changes

- 17.1 All rating changes must be mailed to:
WSSC – WNATR
23251 Oak
Dearborn, MI 48128



WSSC - WEDNESDAY NIGHT AT THE RACES Sailing Instructions 2017

Addendum A – WSSC WNATR Starting Sequence

2017 WNATR STARTING SEQUENCE

Note: Start times are approximate

6:50	Spinnaker C Warning	1 Sound Signal	Yellow Flag Hoisted
6:51	Spinnaker C Signal	1 Long Sound Signal	P Flag Raised
6:54	1 minute to Spinnaker C	1 Long Sound Signal	P Flag Lowered
6:55	Spinnaker C Jam A Warning	1 long sound signal	Yellow flag lowered/ Purple Flag Hoisted
6:56	JAM A Prep Signal	1 Sound Signal	P Flag Raised
6:59	1 minute to JAM A Start	1 Long Sound Signal	P Flag Lowered
7:00	JAM A Start / JAM B Warning	1 Sound Signal	Purple Flag Lowered / Green Flag (JAM B) Hoisted
7:01	JAM B Prep Signal	1 Sound Signal	P Flag Raised
7:04	1 minute to JAM B Start	1 Long Sound Signal	P Flag Lowered
7:05	JAM B Start	1 Sound Signal	Green Flag Lowered

THERE IS A FIVE MINUTE BREAK IN THE SEQUENCE UNTIL SPINNAKER A WARNING SIGNAL

7:10	SPINNAKER A Warning	1 Sound Signal	Blue Flag (Spinnaker A) Hoisted
7:11	SPINNAKER A Prep Signal	1 Sound Signal	P Flag Raised
7:14	1 minute to SPINNAKER A Start	1 Long Sound Signal	P Flag Lowered
7:15	SPINNAKER A start / SPINNAKER B Warning	1 Sound Signal	Blue Flag Lowered / Grey Flag (SPINNAKER B) Hoisted
7:16	SPINNAKER B Prep Signal	1 Sound Signal	P Flag Raised
7:19	1 minute to SPINNAKER B Start	1 Long Sound Signal	P Flag Lowered
7:20	SPINNAKER B Start /	Sound Signal	Grey Flag Lowered /Yellow Flag



WSSC - WEDNESDAY NIGHT AT THE RACES

Sailing Instructions 2017

Addendum B – WSSC WNATR Race Courses

2017 WSSC WNATR Race Courses

(Course direction cards are available on WSSC's website at <http://www.westshoresailclub.org/race>)

<u>Approximate Wind Direction</u>	<u>Course</u>	<u>Class</u>	<u>Mark Rounding Sequence</u>	<u>Distance</u>
345°-15°	N 1	SPINNAKER	Start C-Np-NWp-SWp-Sp-Np-Finish C	7.10 NM
		JAM	Start C-Np-Wp-NEp-Np-Finish C	6.04 NM
345°-15°	N 2	SPINNAKER	Start C-Ns-NEs-SWs-NWs-Finish C	6.18 NM
		JAM	Start C-Ns-NEs-Wp-Finish C	4.63 NM
350°-10°	N 3(WL)	SPINNAKER	Start C-Np-Sp-Np-Finish C	6.00 NM
		JAM	Start C-Np-Sp-NEp-Finish C	5.84 NM
5°-35°	NE 1	SPINNAKER	Start C-NEp-Np-SWp-Sp-NEp-Finish C	7.22 NM
		JAM	Start C-NEp-Wp-SWp-NEp-Finish C	6.59 NM
5°-35°	NE 2	SPINNAKER	Start C-NEp-NWp-Wp-SWp-Finish C	4.95 NM
		JAM	Start C-NEp-W-SWp-Finish C	4.62 NM
10°-30°	NE 3(WL)	SPINNAKER	Start C-NEp-SWp-NEp-Finish C	6.00 NM
		JAM	Start C-NEp-SWp-Ep-Finish C	5.82 NM
105°-75°	E 1	SPINNAKER	Start N-NEs-NWp-Wp-Ep-Finish N	6.35 NM
		JAM	Start N-NEs-Wp-Ep-Finish N	6.03 NM
105°-75°	E 2	SPINNAKER	Start N-NEs-Es-NWp-Cp-Finish N	5.37 NM
		JAM	Start N-NEs-Wp-Cp-Finish N	4.63 NM
155°-125°	SE 1	SPINNAKER	Start N-SEp-Ep-Cs-SEp-Finish N	6.48 NM
		JAM	Start N-SEp-Ep-Ws-Finish N	6.10 NM
155°-125°	SE 2	SPINNAKER	Start N-SEs-Cp-SWs-Finish N	5.70 NM
		JAM	Start N-SEs-SWs-Finish N	5.13 NM
195°-165°	S 1	SPINNAKER	Start N-Sp-SEp-Cp-Sp-Finish N	6.80 NM
		JAM	Start N-Sp-SEp-Ep-NEp-Finish N	5.41 NM
195°-165°	S 2	SPINNAKER	Start N-Sp-NEp-Cs-Finish N	5.80 NM
		JAM	Start N-Sp-Ep-Cs-Finish N	5.30 NM
190°-170°	S 3(WL)	SPINNAKER	Start N-Sp-Cp-Sp-Finish N	6.00 NM
		JAM	Start N-Sp-Cp-Sp-Finish N	6.00 NM
215°-245°	SW 1	SPINNAKER	Start N-SWs-Ws-Cs-Sp-Finish N	6.64 NM
		JAM	Start N-SWs-Ws-Ep-Finish N	6.03 NM
215°-245°	SW 2	SPINNAKER	Start N-SWp-SEp-Cs-Finish N	5.28 NM
		JAM	Start N-SWp-SEp-Finish N	5.13 NM



WSSC - WEDNESDAY NIGHT AT THE RACES

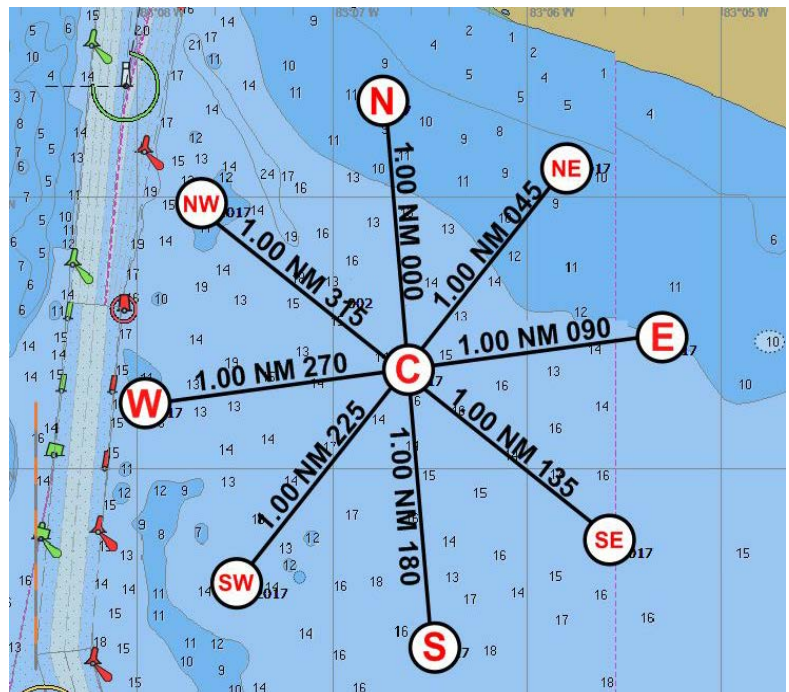
Sailing Instructions 2017

Addendum A –WSSC WNATR Race Courses (Continued)

<u>Approximate Wind Direction</u>	<u>Course</u>	<u>Class</u>	<u>Mark Rounding Sequence</u>	<u>Distance</u>
255°-285°	W 1	SPINNAKER JAM	Start C-Wp-SWp-SEp-Ep-Wp-Finish C	7.00 NM
			Start C-Wp-SEp-NWp-Finish C	5.89 NM
255°-285°	W 2	SPINNAKER JAM	Start C-Wp-SWp-SEp-Ep-Finish C	5.00 NM
			Start C-Wp-SEp-Ep-Finish C	4.64 NM
260°-280°	W3(WL)SPINNAKER JAM	SPINNAKER JAM	Start C-Wp-Ep-Wp-Finish C	6.00 NM
			Start C-Wp-Ep-Wp-Finish C	6.00 NM
295°-325°	NW 1	SPINNAKER JAM	Start C-NWp-SEp-Ep-NWp-Finish C	6.68 NM
			Start C-NWp-SWp-NEp-Finish C	5.40 NM
295°-325°	NW2	SPINNAKER JAM	Start C-NWp-SEp-Np-Finish C	5.87 NM
			Start C-NWp-SWp-Ns-Finish C	5.27 NM
290°-310°	NW3(WL)SPINNAKER JAM	SPINNAKER JAM	Start C-NWp-SEp-NWp-Finish C	6.00 NM
			Start C-NWp-SEp-NWp-Finish C	6.00 NM

**2017 West Shore Sail Club
Wednesday Night at the Races
Course Diagram
(Not to be used for navigation)**

C	N42.01.3854	W083.06.6223
E	N42.01.4959	W083.05.3077
NE	N42.02.1653	W083.05.8038
N	N42.02.3802	W083.06.7850
NW	N42.02.0057	W083.07.6806
W	N42.01.2687	W083.07.9782
SW	N42.00.6022	W083.07.4780
S	N42.00.3872	W083.06.4776
SE	N42.00.7527	W083.05.5806





WSSC - WEDNESDAY NIGHT AT THE RACES Sailing Instructions 2017

Addendum C

WSSC CRUISING CLASS FORMULA

The key principle is that the boat's primary purpose must be cruising rather than racing. This is a subjective call by the race committee in their evaluation. If the boat and its primary crew do not race except for long distance races, that does not make it a cruiser—just a long distance racer. Subject to the race committee's decision the following applies.

1. Boats must be true “cruising” boats meaning that they must have useable bunks, a fixed head (or porta potty), a permanently mounted stove and at least [5] of the following:
 - a. Boat more than [15] years old.
 - b. Only Dacron sails.
 - c. No sail newer than [5] years.
 - d. Carries no spinnaker pole or whisker pole.
 - e. Fixed propeller (can be outboard motor with prop in water.)
 - f. Will carry [4] gallons of water per crew member in a fixed tank.
 - g. Will have fuel to travel [50] miles under engine alone.
 - h. Will have a properly sized anchor and rode mounted on or stored on the bow.
 - i. Windlass.
 - j. A Skeg.
 - k. Radar
 - l. Bow thruster
 - m. Shrouds within [5] inches of the rail.
 - n. Generator, wind generator or solar panel(s).

2. Membership in PHRF-LE and an official PHRF rating are encouraged, however non-members will have a provisional rating assigned without the penalty normally associated with provisional ratings.

3. Sails.
 - a. No spinnakers, cruising chutes or bloopers are allowed.
 - b. Only Dacron, Pentax, polyester, or Mylar fabric may be used in sails.
 - c. Staysails are permitted only if rated as part of a cutter rig.
 - d. Boats rated with roller furling must use a sail which can be furled while racing and cannot change head sails during a race.