

Organizing Authority:
West Shore Sail Club (WSSC)
2022 WSSC Race Committee

Spring Series: May 18– June 15
Summer Series: June 22 – July 27
Fall Series: August 03 – August 24

| Position | Name | Phone |
|-------------------|---------------------------|-----------------------------------|
| Commodore | John Kukla | (734) 558-4147 |
| Vice Commodore | Michael Ingrody | (313) 590-5131 |
| Rear Commodore | Anita Bersie-Chabalowski. | (734) 837-8805 |
| Treasurer | Doug Howe | (734) 675-6133 |
| WNATR Chair | Chris McCardell | (810) 602-1043 |
| Protest Chairman | Dick Synowiec | (734) 674-4008 |
| Protest Committee | Todd Duffett | (734) 558-7384, (734) 675-6386 |
| General Support | Dave Monk | (734) 676-9656 |
| General Support | Matt Dubois | (734) 250-4496, (734) 671-1786 |
| General Support | Alec Chabalowski | (734) 823-4415 |

Race Results will be posted on
noticeofrace.net, westshoresailclub.org, and e-mailed (upon request).

Sailing Instructions

1.0 MANAGEMENT AND RULES

- 1.1 The races will be under the management of the WEST SHORE SAIL CLUB (WSSC) OFFICERS AND RACE COMMITTEE, which will have full and final authority in establishing the racing articles and in interpreting the rules.
- 1.2 The US SAILING RACING RULES of SAILING (RRS), and the prescriptions of the UNITED STATES SAILING ASSOCIATION, except as modified by this program, will govern all races.

2.0 SAIL NUMBERS

- 2.1 Sail numbers must be carried on both sides of mainsail, overlapping headsails, and spinnakers, or in compliance with RRS Appendix G. FINISH TIMES MAY NOT BE TAKEN if sails are not numbered as registered.

3.0 RACE CLASSES

6.0 COURSES AND MARKS

- 6.1 All races (except Make-up #1 & #2) will be sailed utilizing the WSSC RACE BUOYS. The Race Committee will display a course flag or post on a Course Board, as indicated on the Race Course section, Addendum A of these instructions before the first warning signal is hoisted.
- 6.3 The COURSE DIAGRAM is for REFERENCE ONLY. All course headings and distances are **APPROXIMATE** and ARE NOT TO BE USED FOR NAVIGATION.
- 6.4 Marks will be a cylindrical form (unless denoted otherwise), white in color with orange reflective tape and an identification letter; additional orange tape may be applied as required. A round white or orange inflatable buoy may replace a missing mark. If a missing mark has not been replaced by an inflatable buoy or as provided in RRS 34, a virtual rounding will be allowed. (This changes RRS 34). It is recommended that each skipper document this virtual rounding. If your rounding is documented any protest relating to the virtual rounding will be dismissed.
- 6.5 Changes to the Sailing Instructions will be announced prior to implementation, and will be posted by e-mail to each skipper or posted on noticeofrace.net prior to the start of the race. The date that any changes are to go into effect will be listed on the official notice of change.
- 6.6 Make up races (#1 & #2) will be Windward/Leeward starting at or near R2 (USA). Course length will be adjusted depending on wind direction and velocity.

7.0 SIGNALS

- 7.1 Signals shall be hoisted in accordance with RRS Rule 26.
- 7.2 In the event a race is abandoned, Code "N" Flag will be hoisted. Code Flag "N" is a blue and white-checked flag. This changes RRS 32.

- 3.1 Jib and Main (JAM), Spinnaker
- 3.3 Each class may be subdivided based on PHRF rating numbers and the number of competitors registered.
- 3.4 The Race Committee may split the class for purposes of class scoring, at its discretion.

4.0 CLASS FLAGS

- 4.1 Class Flags will not be issued or required.

5.0 RADIO COMMUNICATION

- 5.1 VHF Channel 71 will be used for communication and courtesy broadcasts, as well as for notification of a race being cancelled due to severe weather conditions.
- 5.2 Any yacht that retires from a race shall contact the committee boat. This may be done on channel 71.

8.0 RESTRICTED AREA

- 8.1 The restricted area is an oval whose imaginary boundary is Fifty (50) yards away from both sides and both ends of the start/finish line. Each yacht must KEEP CLEAR of the restricted area, and the first leg of the course until the warning signal, 5 minutes before its class start.
- 8.2 After starting, a boat shall not cross the start/finish line until she finishes. The line and its ends shall be considered obstructions for the purposes of RRS 19 and 20.
- 8.3 If a boat fails to stay clear of the start/finish line during the duration of the race (except when starting and finishing) that boat can be protested by the committee boat or another competitor and may be subject to disqualification.

9.0 STARTING SEQUENCE

- 9.1 The starting sequence will be in the following order. See Addendum A for more details. Note: Start times are approximate

| Time (PM) | Event | Flag |
|-----------|-------------|-------------|
| 6:55 | Spinnaker | Yellow Flag |
| 7:00 | Blank Start | |
| 7:05 | Spinnaker A | Blue Flag |
| 7:10 | Spinnaker B | Green Flag |
| 7:15 | JAM A & B | Purple Flag |

10.0 START

- 10.1 Races will be started using RRS rule 26, with classes starting as listed on the starting sequence listed in these instructions.
- 10.2 The starting line shall be between a staff displaying an orange flag on the Committee boat (or the mast of the committee boat if no orange flag is displayed) and the course side of the starting mark.

Formatted: Different first page header

Formatted Table

Formatted: Normal

- 10.3 The Committee boat may utilize a protection buoy. This buoy is considered to be an extension of the Committee boat. No yacht may properly start between the protection buoy and the committee boat.
- 10.4 The committee boat will attempt to acknowledge any boats on the course side (OCS) of the starting line at her starting signal by the following: displaying code flag X (white with blue cross) along with a sound signal, and hailing the sail number or boat name. An attempt may also be made to hail the sail numbers of any boats OCS on VHF channel 71. Failure of a boat to observe these signals will not excuse a premature start. It is the responsibility of each yacht to make a proper start.
- 10.5 CONTACT WITH THE COMMITTEE BOAT MEANS AUTOMATIC DISQUALIFICATION WITHOUT APPEAL! This changes RRS 31 and 21.

11.0 FINISH

- 11.1 The finish line shall be between a staff displaying an orange flag on the Committee boat (or the RC Flag if an orange flag is not displayed), and the course side of the finishing mark. Boats shall be considered finished when any part of their boat in normal position passes across the finish line from the course side (from the direction of the last mark).
- 11.2 To assure the best possible accuracy in timekeeping, after dark, call out your sail number and illuminate your sail as you approach the finish line. It is the responsibility of each yacht to know the time you finish and the yachts finishing before and after you. KEEP A RECORD AND CONTACT THE RACE COMMITTEE IF YOU FIND A DISCREPANCY.
- 11.3 The committee boat will try to display a yellow anti-collision strobe light or other identifying light and its anchor light after dark.
- 11.4 The race committee boat will remain on station until 2200 hours GPS time (10:00 PM). The committee boat will not take the time of any yacht finishing after 2200 hours GPS Time (10:00pm). One yacht finishing in a class before the time limit expires constitutes a valid race for that class.

12.0 INDIVIDUAL RACE RESULTS

- 12.1 Preliminary race results may be announced at an afterglow at the discretion of the WNATR race chairman.
- 12.2 Official results will be posted on noticeofrace.net.

13.0 SERIES SCORING

- 13.1 The Low Point Scoring System described in the US Sailing RRS applies. Three series of four races each are scheduled, those being a Spring-, Summer-, and Fall-Series. Series totals are computed by totaling the best three race scores for the series.
- 13.2 Shall a tie occur, the tie breaker will follow US Sailing RRS Tie breaking series rule, only using Appendix A scoring, series ties A8.1. If a tie still remains, the tie will not be broken.
- 13.3 In the event that a class only completes three races in a series, there will not be any throw outs.
- 13.4 A boat that does not start (DNS) will be scored points equal to the total of the number of boats registered for that start. A boat that starts but does not finish (DNF) will be scored the number of

boats that finish, plus one. A boat that is disqualified (DSQ) is scored the number of boats registered for the series, plus one.

- 13.5 Committee boats are selected from WSSC members or volunteers on a rotating basis. The skipper responsible for Committee boat duty must supply and serve on the Committee boat. **Boats serving as Committee boat will be given a First Place Finish for that race.**
- 13.6 Skippers that do not reasonably follow instructions that are supplied in the committee boat box, shall be considered not following committee boat duties. They shall be subject to protest hearing with potential penalties of not receiving the score for the race, or potentially a DNS.

14.0 WNATR AWARDS

- 14.1 Flags will be awarded to the top finishers in each class for each series (Spring, Summer and Fall). The number of flags awarded per class will be at the discretion of the WSSC Race Committee.
- 14.2 A trophy will be awarded to the yacht that finishes first in each class for the year.
Overall Award will be calculated as follows:
If 14-15 races, then the best 11 of 14/15 will be counted.
If 13 races then, the best 10 of 13 races will be counted
If 12 or less races, then best 9 races will be counted
- 14.3 West Shore Sail Club will award Boat of the Year trophies to the WSSC yacht in the SPINNAKER and JAM classes accumulating the best point record using the Cox-Sprague scoring system. Refer to the WSSC web site for details.

15.0 PROTESTS

- 15.1 Yachts protesting must follow Part 5, Section A of RRS, except there shall be no charge for filing a protest.
- 15.2 A boat wishing to protest must inform the committee boat of their intention to protest, either by hail or VHF, after finishing, and must inform a member of the RACE COMMITTEE within two (2) hours of finish (or retiring) of their intent to file protest.
- 15.3 Protest shall be written on a US Sailing Protest, Regress and Reopening form listed at the end of Appendix T of RRS and lodged with a WSSC race committee representative by 10 pm on the first Friday after finishing or retiring from the race. A protest can be lodged in person, by text or email.
- 15.4 The protest committee will use pre-hearings whenever possible to expedite the protest processes. If involved in a protest, you will be notified of the pre-hearing procedure.
- 15.5 All protests will be heard at a time and place to be determined by the protest committee. Protest procedures as outlined in Appendix M of RRS will be followed. Competitors will be informed when there is a hearing in which they are an interested party. Failure on the part of any party to attend a protest, or send a representative to attend the hearing may justify the Protest Committee to decide the protest as it deems fit with the evidence available.
- 15.6 The Two-Turns Penalty is replaced by the One-Turn Penalty. This changes RRS 44.1.

Formatted: Indent: First line: 0"

Formatted: Indent: First line: 0.25"

Formatted: Normal

16.0 HOMELAND SECURITY

16.1 Racers should be aware that numerous restrictions on maneuvering and navigation may be in place on **international waters** constituting and adjacent to the racing area, mainly in the Detroit River Shipping channel. Failure to honor these and subsequent delays to racing due to that are NOT grounds for redress.

16.2 Racing boats shall not be entitled to redress due to stoppage or other material interference by law enforcement authorities.

17.0 Rating Changes

17.1 All rating changes can be emailed to: courtofficer@att.net or mailed to WSSC/WNATR c/o Chris McCardell 23251 Oak St, Dearborn, MI 48128.

Formatted: Normal

Addendum A – WSSC WNATR Starting Sequence

2022 WNATR STARTING SEQUENCE

A FIVE MINUTE DELAY MAY BE PLACED BETWEEN ANY START AT THE DISCRETION OF THE COMMITTEE BOAT

Note: Start times are approximate

| Time | Event | Sound | Flag |
|------|--|---------------------|--|
| 6:50 | Spinnaker C Warning | 1 Sound Signal | Yellow Flag Raised |
| 6:51 | Spinnaker C Prep Signal | 1 Long Sound Signal | P Flag Raised |
| 6:54 | 1 Minute to Spinnaker C | 1 Long Sound Signal | P Flag Lowered |
| 6:55 | Spinnaker C Start / JAM B Warning | 1 Long sound signal | Yellow flag lowered |
| 6:56 | Blank Start Prep Signal | 1 Sound Signal | |
| 6:59 | 1 Minute to Blank Start | 1 Long Sound Signal | |
| 7:00 | Blank Start / Spinnaker A Warning | 1 Sound Signal | Blue Flag Raised |
| 7:01 | Spinnaker A Prep Signal | 1 Sound Signal | P Flag Raised |
| 7:04 | 1 Minute to Spinnaker A Start | 1 Long Sound Signal | P Flag Lowered |
| 7:05 | Spinnaker A Start / Spin B Warning | 1 Sound Signal | Blue Flag Lowered / Green Flag Raised |
| 7:06 | SPINNAKER B Prep Signal | 1 Sound Signal | P Flag Raised |
| 7:09 | 1 Minute to SPINNAKER B Start | 1 Long Sound Signal | P Flag Lowered |
| 7:10 | SPINNAKER B Start / JAM A & B Warning | 1 Sound Signal | Green Flag Lowered / Purple Flag Raised |
| 7:11 | JAM A & B Prep Signal | 1 Sound Signal | P Flag Raised |
| 7:14 | 1 Minute to JAM A & B Start | 1 Long Sound Signal | P Flag Lowered |
| 7:15 | Jam A & B Start | 1 Sound Signal | Purple Flag Lowered |

Formatted: Font: (Default) +Body (Calibri), 11 pt, Bold

Formatted Table

Formatted: Normal

Addendum B – WSSC WNATR Race Courses

2022 WSSC WNATR Race Courses

(Course direction cards are available on WSSC's website at <http://www.westshoresailclub.org/race>)

| Approximate Wind Direction | Course | Class | Mark Rounding Sequence | Distance |
|----------------------------|-----------|-----------|------------------------------------|----------|
| 345°-15° | N1 | SPINNAKER | Start C-Np-NWp-SWp-Sp-Np-Finish C | 7.10 NM |
| | | JAM | Start C-Np-Wp-NEp-Np-Finish C | 6.04 NM |
| | N2 | SPINNAKER | Start C-Ns-NEs-SWs-NWs-Finish C | 6.18 NM |
| | | JAM | Start C-Ns-NEs-Wp-Finish C | 4.63 NM |
| 350°-10° | N3 (WL) | SPINNAKER | Start C-Np-Sp-Np-Finish C | 6.00 NM |
| | | JAM | Start C-Np-Sp-NEp-Finish C | 5.84 NM |
| 5°-35° | NE 1 | SPINNAKER | Start C-NEp-Np-SWp-Sp-NEp-Finish C | 7.22 NM |
| | | JAM | Start C-NEp-Wp-SWp-NEp-Finish C | 6.59 NM |
| | NE 2 | SPINNAKER | Start C-NEp-NWp-Wp-SWp-Finish C | 4.95 NM |
| | | JAM | Start C-NEp-Wp-SWp-Finish C | 4.62 NM |
| 10°-30° | NE 3 (WL) | SPINNAKER | Start C-NEp-SWp-NEp-Finish C | 6.00 NM |
| | | JAM | Start C-NEp-SWp-Ep-Finish C | 5.82 NM |
| 105°-75° | E1 | SPINNAKER | Start N-NEs-NWp-Wp-Ep-Finish N | 6.35 NM |
| | | JAM | Start N-NEs-Wp-Ep-Finish N | 6.03 NM |
| | E2 | SPINNAKER | Start N-NEs-Es-NWp-Cp-Finish N | 5.37 NM |
| | | JAM | Start N-NEs-Wp-Cp-Finish N | 4.63 NM |
| 155°-125° | SE1 | SPINNAKER | Start N-SEp-Ep-Cps-SEp-Finish N | 6.48 NM |
| | | JAM | Start N-SEp-Ep-Ws-Finish N | 6.10 NM |
| | SE2 | SPINNAKER | Start N-SEs-Cp-SWs-Finish N | 5.70 NM |
| | | JAM | Start N-SEs-SWs-Finish N | 5.13 NM |
| | SE3 | SPINNAKER | Start N-Es-Wp-Sp- Finish N | 6.82 NM |
| | | JAM | Start N-Es-Wp-Cp-Finish N | 5.41NM |
| 195°-165° | S1 | SPINNAKER | Start N-Sp-SEp-Cp-Sp- Finish N | 6.80 NM |
| | | JAM | Start N-Sp-SEp-Ep-NEp-Finish N | 5.41 NM |
| | S2 | SPINNAKER | Start N-Sp-NEp-Cs-Finish N | 5.80 NM |
| | | JAM | Start N-Sp-Ep-Cs-Finish N | 5.30 NM |
| 190°-170 | S3 (WL) | SPINNAKER | Start N-Sp-Cp-Sp-Finish N | 6.00 NM |
| | | JAM | Start N-Sp-Cp-Sp-Finish N | 6.00 NM |
| 215°-245° | SW1 | SPINNAKER | Start N-SWs-Ws-Cs-Sp-Finish N | 6.64 NM |
| | | JAM | Start N-SWs-SEp-Finish N | 5.13 NM |

Formatted Table

Formatted Table

Formatted: Font: (Default) Arial

Formatted: Font: (Default) Arial, Bold

Formatted: Font: (Default) Arial

Formatted: Font: (Default) Arial, Font color: Auto

Formatted: Font: (Default) Arial

Formatted: Font: (Default) Arial, Bold, Font color: Auto

Formatted: Font: (Default) Arial, Font color: Auto

Formatted: Font: (Default) Arial

Formatted: Font: (Default) Arial, Font color: Auto

Formatted: Font: (Default) Arial

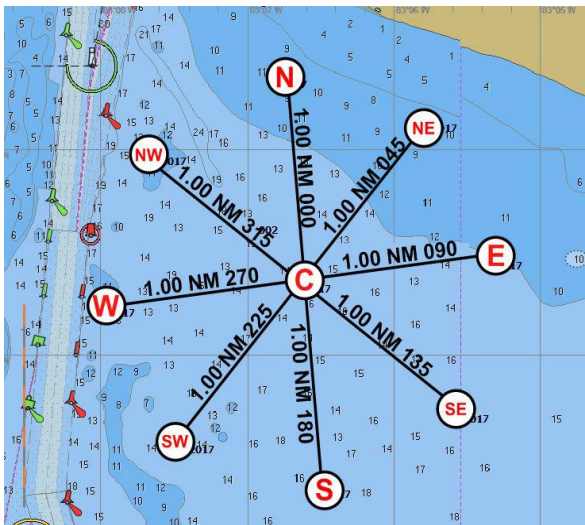
Formatted: Font: (Default) Arial

Formatted: Font: (Default) Arial, Bold

Formatted: Normal

| | | | | |
|-----------|----------|-----------|-----------------------------------|---------|
| 255°-285° | W1 | SPINNAKER | Start C-Wp-SWp-SEp-Ep-Wp-Finish C | 7.00 NM |
| | | JAM | Start C-Wp-SEp-NWp-Finish C | 5.89 NM |
| | W2 | SPINNAKER | Start C-Wp-SWp-SEp-Ep-Finish C | 5.00 NM |
| | | JAM | Start C-Wp-SEp-Ep-Finish C | 4.64 NM |
| 260°-280° | W3 (WL) | SPINNAKER | Start C-Wp-Ep-Wp-Finish C | 6.00 NM |
| | | JAM | Start C-Wp-Ep-Wp-Finish C | 6.00 NM |
| 295°-325° | NW1 | SPINNAKER | Start C-NWp-SEp-Ep-NWp-Finish C | 6.68 NM |
| | | JAM | Start C-NWp-SWp-NEp-Finish C | 5.40 NM |
| | NW2 | SPINNAKER | Start C-NWp-SEp-Np-Finish C | 5.87 NM |
| | | JAM | Start C-NWp-SWp-Np-Finish C | 5.27 NM |
| 290°-310° | NW3 (WL) | SPINNAKER | Start C-NWp-SEp-NWp-Finish C | 6.00 NM |
| | | JAM | Start C-NWp-SEp-NWp-Finish C | 6.00 NM |

**2022 West Shore Sail Club
Wednesday Night at the Races
Course Diagram**
(**Not** to be used for navigation)



| | | |
|----|-------------|--------------|
| C | N42.01.3854 | W083.06.6223 |
| E | N42.01.4959 | W083.05.3077 |
| NE | N42.02.1653 | W083.05.8038 |
| N | N42.02.3802 | W083.06.7850 |
| NW | N42.02.0057 | W083.07.6806 |
| W | N42.01.2687 | W083.07.9782 |
| SW | N42.00.6022 | W083.07.4780 |
| S | N42.00.3872 | W083.06.4776 |
| SE | N42.00.7527 | W083.05.5806 |

Formatted: Normal

Wednesday Night at the Races **2022**

Spring Series

May 18
May 25
June 01
June 15

Summer Series

June 22
June 29
July 06
July 27

Fall Series

August 03
August 10
August 17
August 24

Make Up #1: August 31
Make Up #2: September 7

Formatted: Normal